



**Enclosure for operating instruction**  
**AMAZONE-Bulk Material Broadcaster ZG-B 1**  
**Print No.: DB 510 GB / MG 251**

**Please note changes on pages:**

**Page 6 - 5:** Changed fitting measurements for the universal spreading unit.

**Page 7 - 13:** Changed fitting measurements for the guide chute.

**Page 7 - 13:** Para 7.6

Checking the outlet-openings of the guide chute before every operation.



**AMAZONEN-WERKE**  
**H. DREYER GmbH & Co. KG**

Postfach 51  
D-49202 Hasbergen-Gaste

Tel.: (05405) 501-0  
Telefax: (05405) 501147

Zweigwerke:  
D-27794 Hude · F-57602 Forbach  
Werksniederlassungen in England und Frankreich.

Fabriken für Mineraldüngerstreuer, Feldspritzen, Sämaschinen, Bodenbearbeitungs-  
maschinen, Mehrzweck-Lagerhallen und Kommunalgeräte

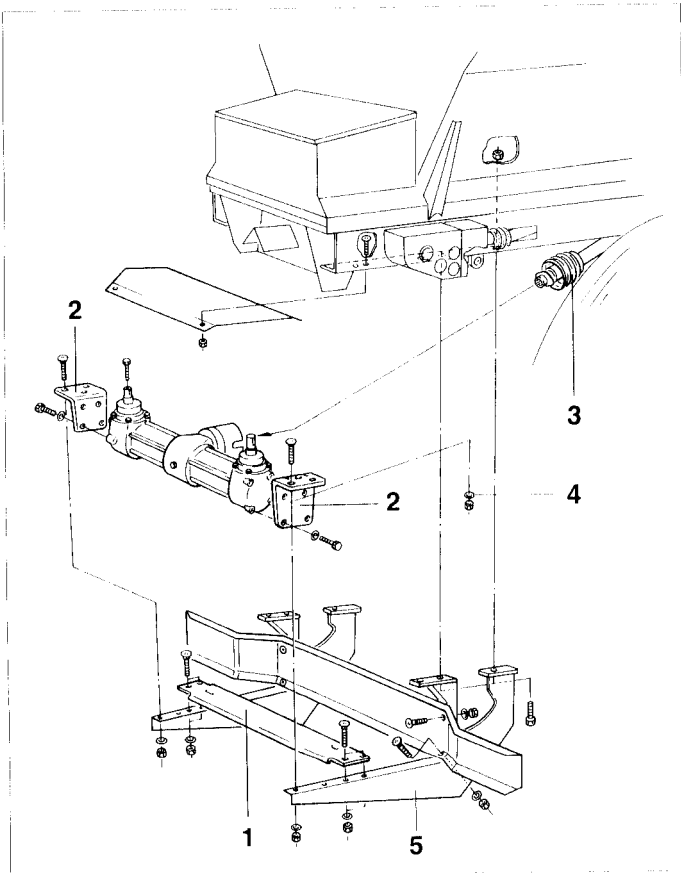


Fig. 6.3

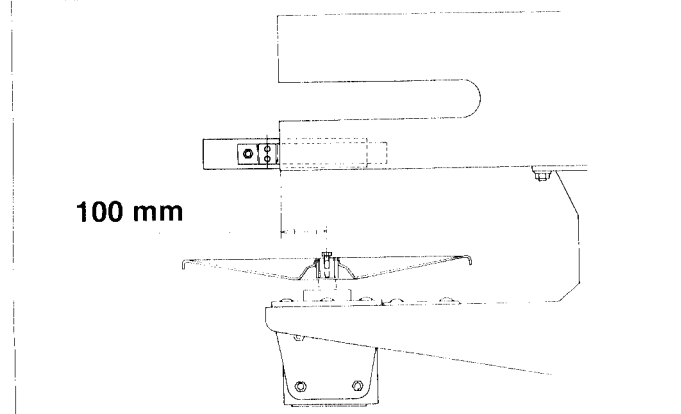


Fig. 6.4

## 6.1 Fitting the Universal Spreading Unit

- Fit the universal spreading unit as described in figure 6.3.

### **Important:**

Fit the universal spreading unit centrally in relation to the vehicle.

The distance (see fig. 6.4) from the middle of the drive shaft to the frame of the bulk precision broadcaster is **100 mm**.

Bolt the universal gears in place.

Push the stop (fig. 6.3/1) onto the angle brackets (fig. 6.3/2) of the universal spreading unit and then bolt it in place.

Push stop-disk (Fig. 6.3/4) sideways against carrier of spreading unit (Fig. 6.3/5) and also bolt it in place.

- Attach the p.t.o. shaft with the overriding clutch (fig. 6.3/3) to the end of the spreading unit's p.t.o. shaft and ensure that it engages correctly.

### **Notes Regarding Disassembly:**

- Do not remove the stop (fig. 6.3/1). When fitted again at a later date, the universal spreading unit can be simply slid against the stop and secured.
- The half of the p.t.o. shaft (fig. 6.3/3) that is hanging beneath the bulk precision broadcaster must be completely removed before taking off the universal spreading unit.

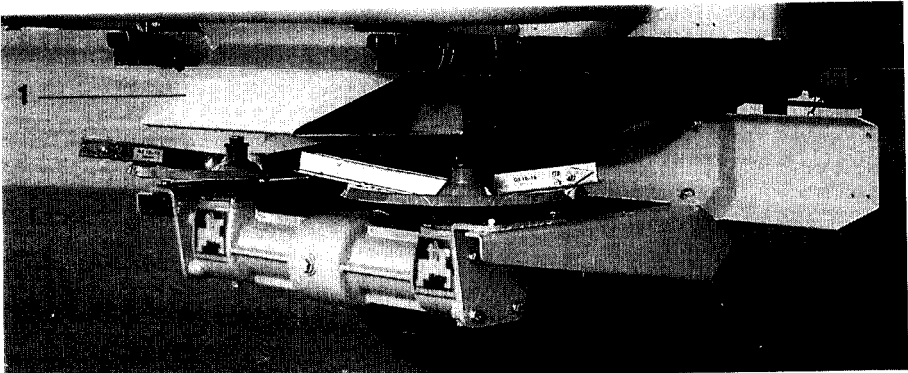


Fig. 7.16

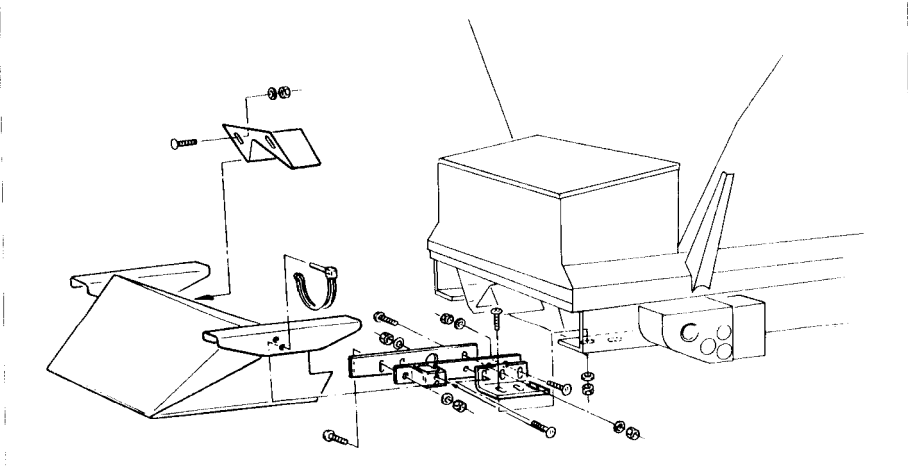


Fig. 7.17

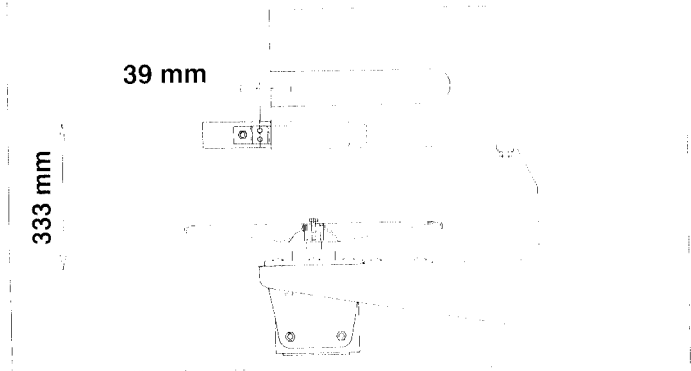


Fig. 7.18

## 7.5 Fitting the Funnel Chute

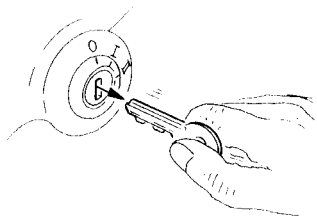
- Remove the additional chute (fig. 7.4/2, if applicable).
- Secure the funnel chute (fig. 7.16/1) according to fig. 7.17.

### Important:

The distance (see fig. 7.18) between the frame of the bulk precision broadcaster and the center of the hole through which the linch pin to secure the funnel chute is passed is **39 mm**. The clearance between the guide chute base and the gearbox carrier is **333 mm** (see Fig. 7.18).

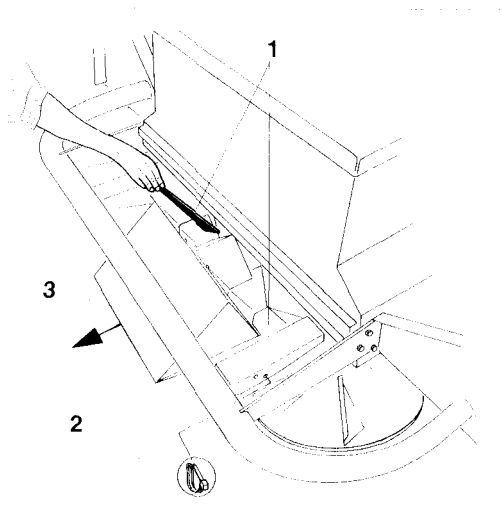
## 7.6 Checking the outlet-openings of the guide chute before every operation

Spreading material can build up inside the outlet openings (Fig. 7.19/1) of the guide chute to become too narrow to achieve a correct spread pattern. To achieve a correct spread pattern ensure that both outlets are clean. Therefore before every operation of the bulk spreader check resp. clean the outlets as follows:



**Disengage tractor p.t.o. shaft, stop tractor engine and remove ignition key.**

- pull out two clip pins (Fig. 7.19/2) and pull guide chute (Fig. 7.19/3) to the rear until the outlets (Fig. 7.19/1) can be seen
- check resp. clean the outlet openings
- push guide chute back into position and affix by two clip pins (Fig. 7.19/2) as described on pages 7 - 11 again.



**Fig. 7.19**





